

LEVEL 1  
UNIT 1  
REGISTERED IN THE OFFICE OF LAND TITLES  
AT OTTAWA AT 3:17 P.M. 10 O'CLOCK ON THE  
DAY OF 20<sup>th</sup> January 1978  
*C. W. Fairhall*  
MASTER OF TITLES  
APPROVED FOR REGISTRATION 1 Dec. 1971  
*C. W. Fairhall*  
EXAMINER OF SURVEYS  
DECLARATION REGISTERED AS No 83193  
C-5637

INDEX OF SHEETS  
PART 1 LEVEL 1  
SHEET 1- PLAN OF SURVEY SHOWING PERIMETER OF LAND, GENERAL CONFIGURATION OF BUILDINGS  
AND EXTENT OF UNIT BOUNDARIES (GROUND FLOOR)  
PART 2 LEVEL 2 TO 18  
SHEET 1- PLAN OF COMPILATION SHOWING SPECIFICATION AND RELATIONSHIP BETWEEN UNIT  
BOUNDARIES AND THE MONUMENTATION (1<sup>st</sup> floor to 17<sup>th</sup> floor)  
PART 3 LEVEL 19  
SHEET 1- PLAN OF COMPILATION SHOWING SPECIFICATION AND RELATIONSHIP BETWEEN UNIT  
BOUNDARIES AND THE MONUMENTATION (18<sup>th</sup> floor)  
PART 4 SHEETS 1 TO 35- ARCHITECTURAL AND STRUCTURAL PLANS.

PLAN

OF SURVEY OF  
PART OF LOT 1  
REGISTERED PLAN No 90  
CITY OF VANIER

REGIONAL MUNICIPALITY OF OTTAWA - CARLETON

SCALE: 1" = 20'  
C.W. FAIRHALL  
ONTARIO LAND SURVEYOR  
1971

Parts 1-3 hereby approved and Part 4  
assumed and Section 24 of the CONDOMINIUM  
ACT 1967 and Section 28 of the PLANNING ACT  
THIS 15<sup>th</sup> day of November 1971  
*C. W. Fairhall*  
DALTON CLERK  
Minister of Municipal Affairs

LEGEND  
--- DENOTES UNIT BOUNDARIES  
--- DENOTES EXTERIOR FACE OF STRUCTURAL WALLS  
S.I.B. DENOTES STANDARD IRON BAR (1" 50 x 48" LONG)  
S.S.B. DENOTES SHORT STANDARD IRON BAR (1" 50 x 24" LONG)  
I.B. DENOTES IRON BAR (5/8" 50 x 24" LONG)

NOTES  
BEARINGS ARE ASTRONOMIC AND ARE DERIVED FROM OBSERVATIONS ON  
THE SUN AND ARE REFERRED TO THE MERIDIAN OF LONGITUDE 75° 39' 45" W

OWNER'S CERTIFICATE  
THIS IS TO CERTIFY THAT THE PROPERTY INCLUDED IN THIS PLAN HAS BEEN LAID  
OUT INTO UNITS AND COMMON ELEMENTS IN ACCORDANCE WITH OUR INSTRUCTIONS.

DATED AT OTTAWA THIS 15<sup>th</sup> DAY OF NOVEMBER 1971.

VANIER INVESTMENTS LIMITED  
*T. C. Assaly, President*

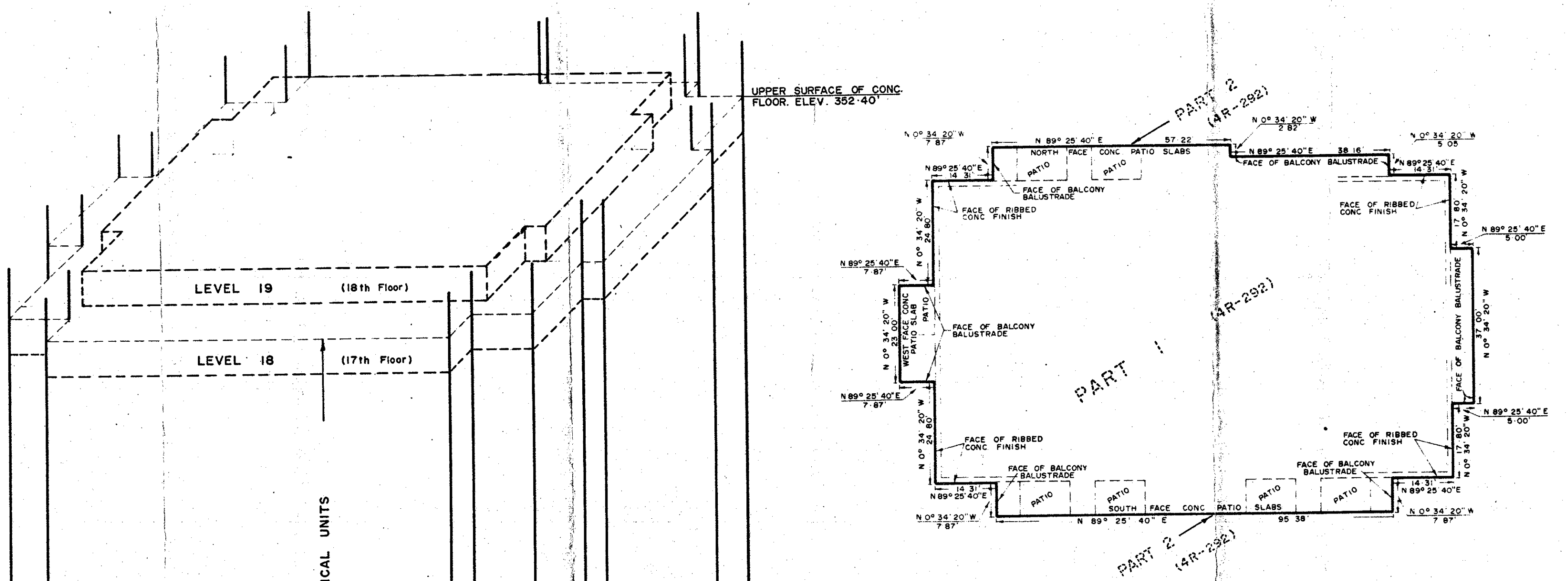
SURVEYOR'S CERTIFICATE  
I HEREBY CERTIFY THAT  
1. THIS SURVEY AND PLAN ARE CORRECT AND IN ACCORDANCE WITH  
THE CONDOMINIUM ACT 1967 AND THE SURVEYS ACT AND THE  
REGULATIONS MADE THEREUNDER,  
2. I WAS PRESENT AND DID PERSONALLY SUPERVISE THE SURVEY  
REPRESENTED BY THIS PLAN,  
3. THIS PLAN CONTAINS A TRUE COPY OF THE FIELD NOTES OF SURVEY,  
4. THE SURVEY WAS COMPLETED ON THE 12<sup>th</sup> DAY OF NOVEMBER 1971.

NOVEMBER 15 1971  
*C. W. Fairhall*  
C.W. FAIRHALL  
ONTARIO LAND SURVEYOR

SURVEYOR'S CERTIFICATE  
I HEREBY CERTIFY THAT THE BUILDING SHOWN ON THIS PLAN IS IN EXISTENCE  
AND THAT THE UNITS DESIGNATED ON THIS PLAN SUBSTANTIALLY REPRESENT  
THE UNITS WITHIN THE STRUCTURE.

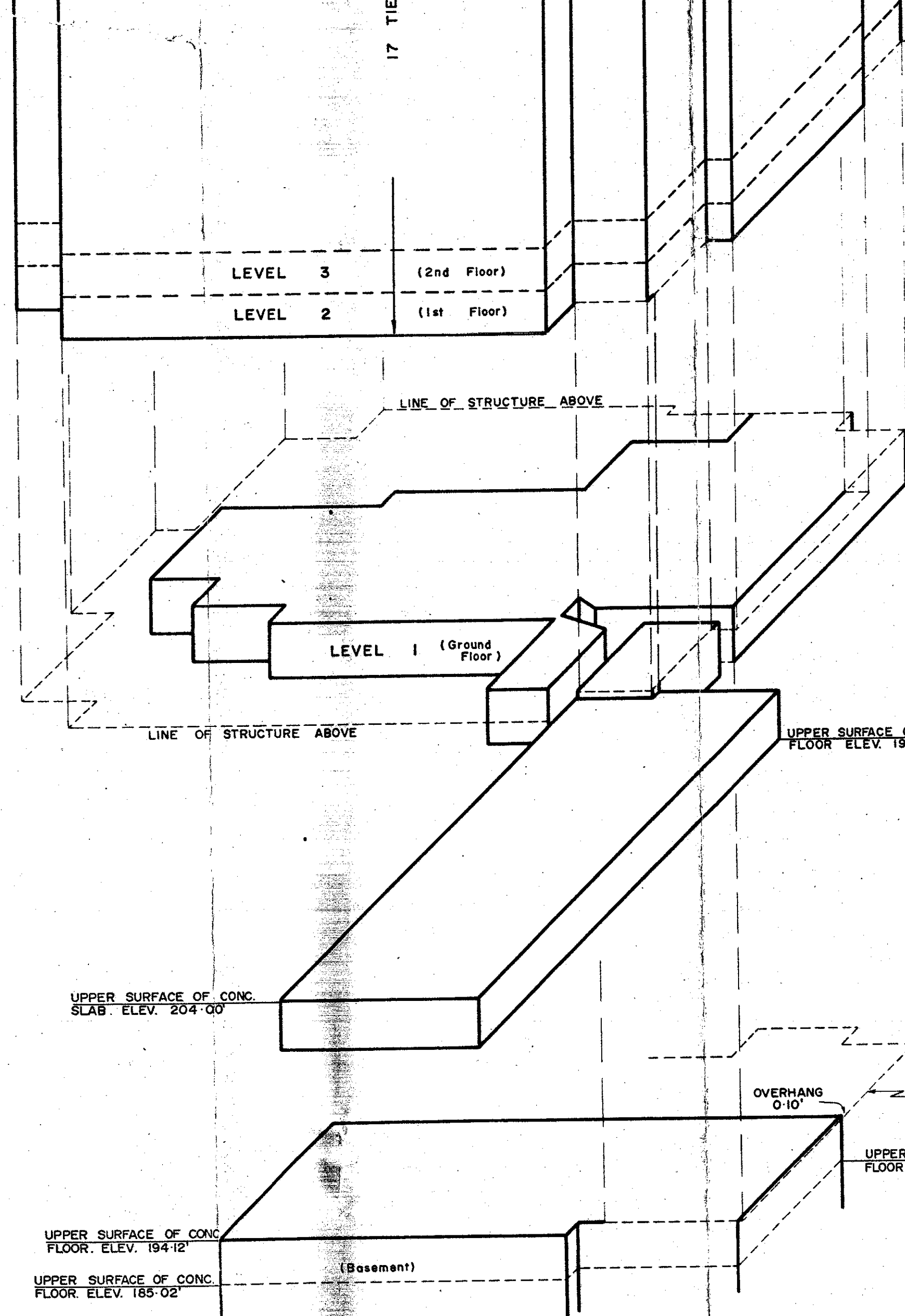
NOVEMBER 15 1971  
*C. W. Fairhall*  
C.W. FAIRHALL  
ONTARIO LAND SURVEYOR

FAIRHALL AND MOFFATT  
ONTARIO LAND SURVEYORS  
OTTAWA ONTARIO

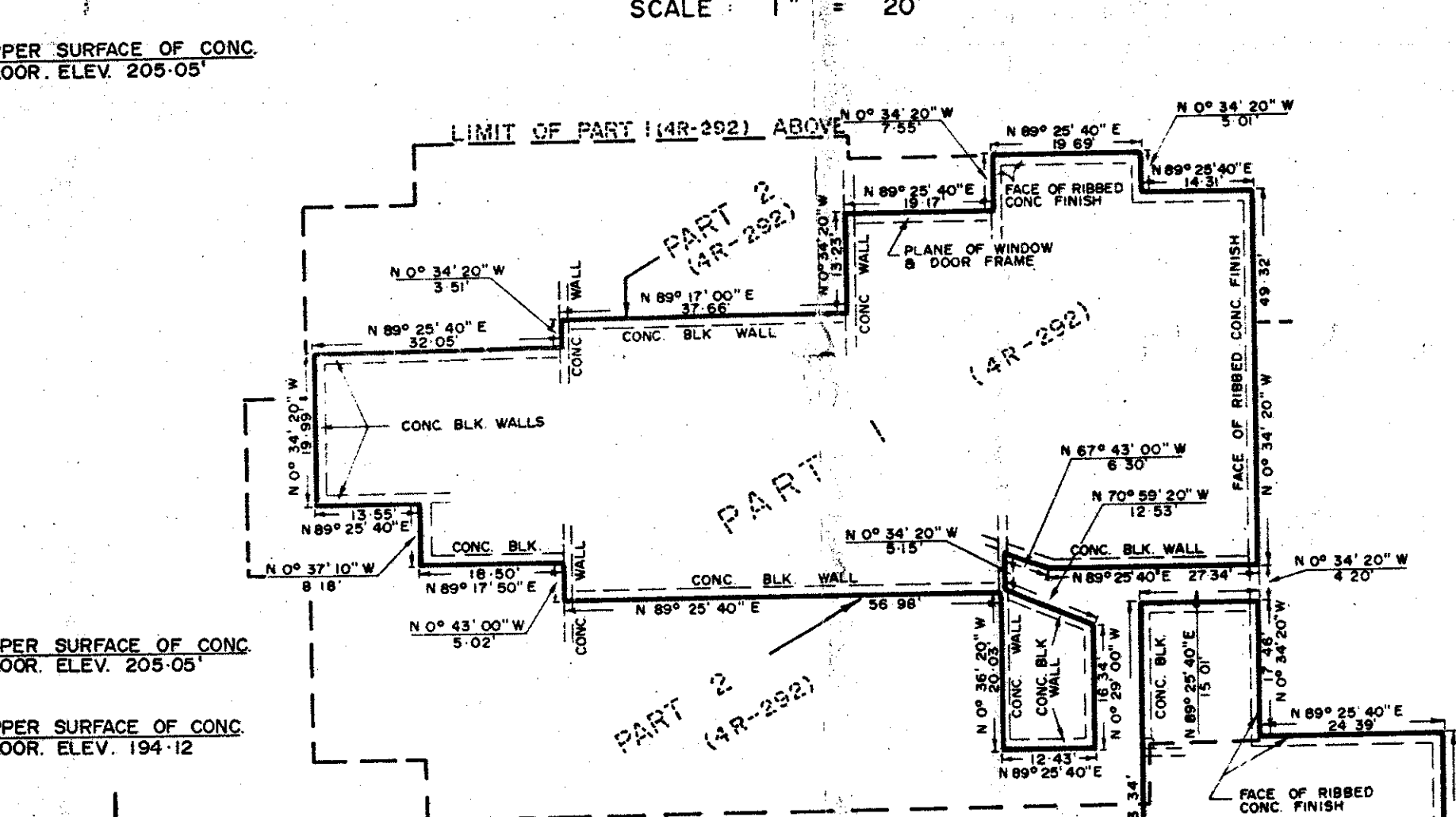


PLAN OF LEVELS ABOVE ELEVATION 205-05

SCALE: 1" = 20'

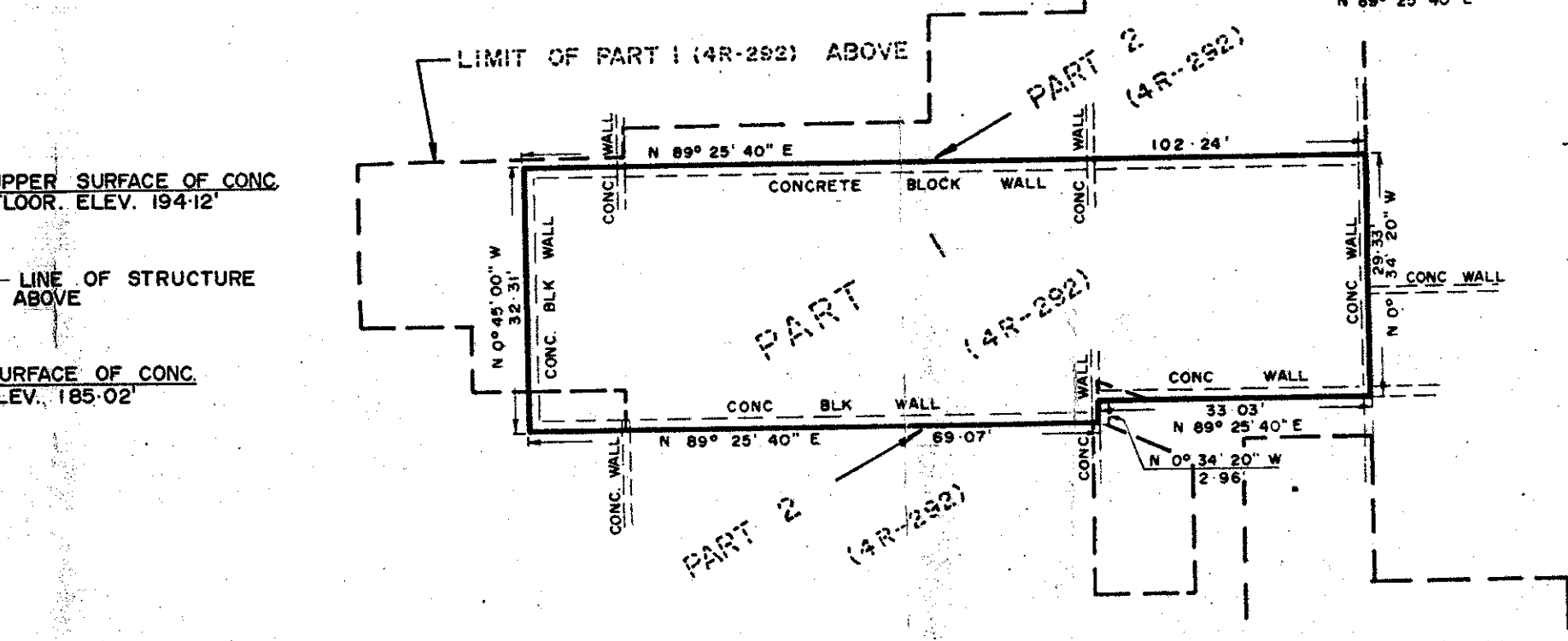


EXPLODED OBLIQUE VIEW  
ILLUSTRATING RELATIONSHIP BETWEEN LEVELS



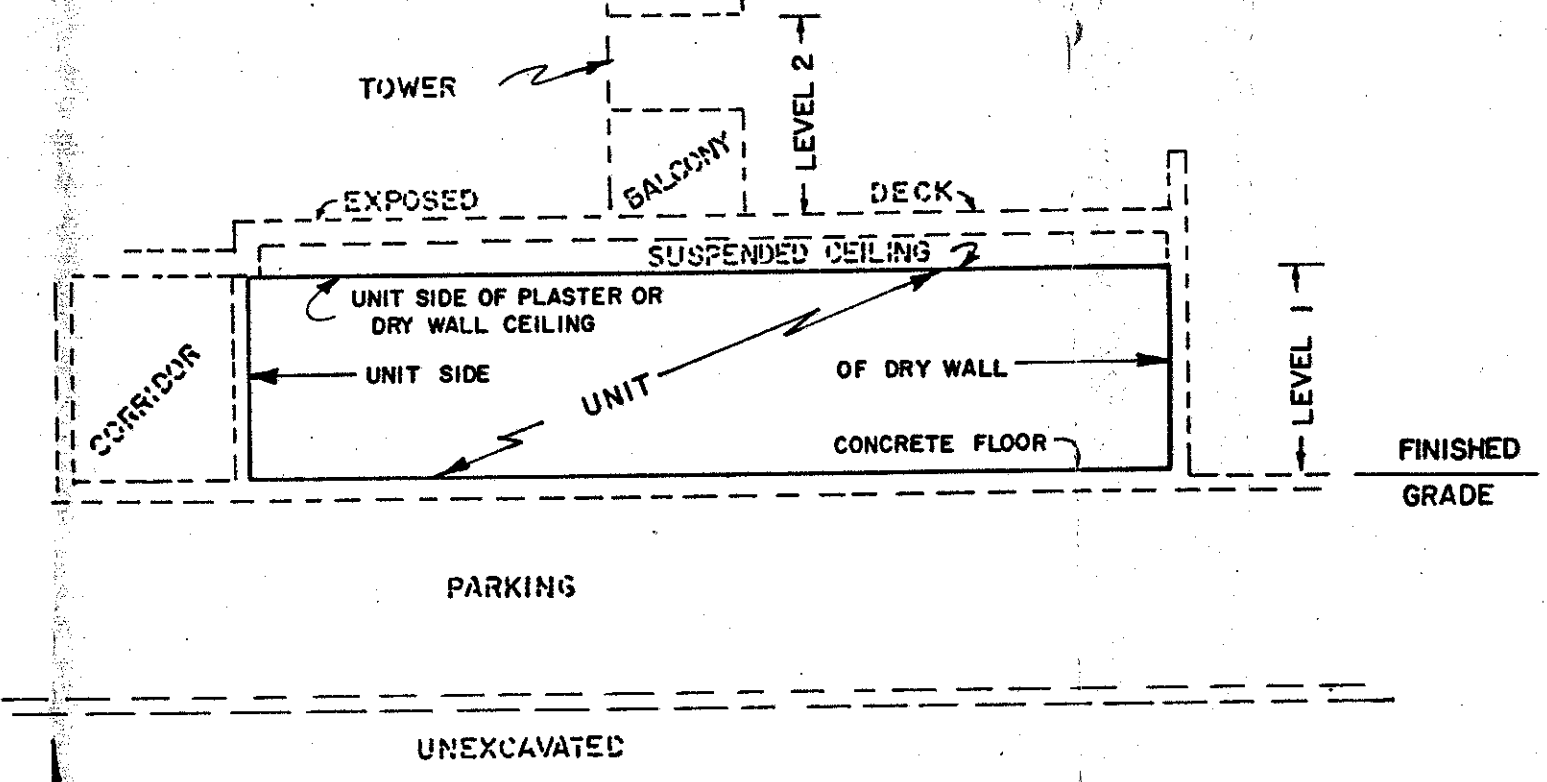
PLAN ELEVATIONS 194-12 BETWEEN  
LEVEL 1

SCALE: 1" = 20'

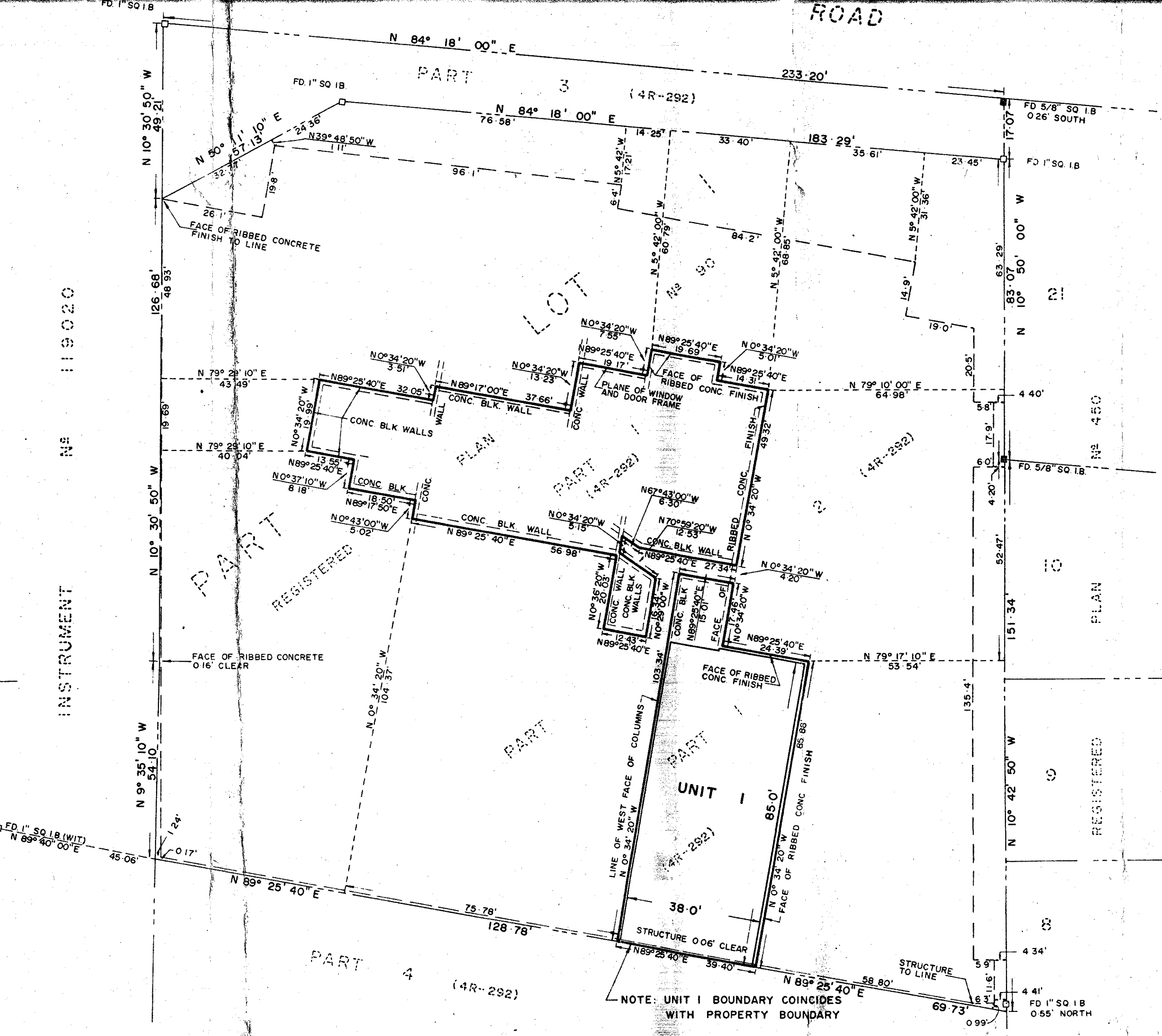


PLAN BELOW ELEVATION 194-12

SCALE: 1" = 20'



VERTICAL SECTION  
SCALE 1/8"



UNIT BOUNDARY DEFINITION  
VERTICAL FROM THE UPPER SURFACE OF THE CONCRETE FLOOR TO THE UNDER  
SURFACE OF THE DRY WALL OR PLASTER CEILING  
HORIZONTAL FROM THE UNIT SIDE OF THE DRY WALL FINISH ON THE EXTERIOR  
WALLS OF THE BUILDING OF WHICH THE UNIT IS PART,  
TO THE UNIT SIDE OF THE DRY WALL FINISH ON THE WALLS AND  
PARTITIONS SEPARATING SUCH A UNIT FROM OTHER UNITS, CORRIDORS,  
STAIRS, ELEVATORS, INCINERATORS AND OTHER MECHANICAL EQUIPMENT  
SPACES AND THE EXTENSION OF THE PLAINS OF SUCH SURFACES  
ACROSS OPENINGS FOR DOORS LEADING OUT OF SUCH UNITS AND  
WINDOWS

NOTE: FOR COMPLETE UNIT BOUNDARY DEFINITION REFER TO PAGE 2  
OF THE DECLARATION