

PLAN
 OF SURVEY OF
 PART OF LOT 1
 REGISTERED PLAN No 90
 CITY OF VANIER
 REGIONAL MUNICIPALITY OF OTTAWA - CARLETON
 SCALE: 1" TO 20'
 C.W. FAIRHALL
 ONTARIO LAND SURVEYOR
 1972

Part 1-3 hereby approves on 11/10/72
 C.W. Fairhall
 Ontario Land Surveyor
 Registered Professional Engineer
 1972

LEGEND
 — DENOTES UNIT BOUNDARIES
 □ 5/8" DENOTES EXTERIOR FACE OF STRUCTURAL WALLS
 □ 5/8" DENOTES STANDARD IRON BAR (1" 50' x 48" LONG)
 □ 5/8" DENOTES SHORT STANDARD IRON BAR (1" 50' x 24" LONG)
 ■ 18" DENOTES IRON BAR (5/8" 5' x 24" LONG)

NOTES
 BEARINGS ARE ASTROMONIC AND ARE DERIVED FROM OBSERVATIONS ON THE SUN AND ARE REFERRED TO THE MERIDIAN OF LONGITUDE 75°39'45" W FOR COMPLETE UNIT BOUNDARY DEFINITION REFER TO PAGE 2 OF THE DECLARATION.

OWNER'S CERTIFICATE
 THIS IS TO CERTIFY THAT THE PROPERTY INCLUDED IN THIS PLAN HAS BEEN LAID OUT INTO UNITS AND COMMON ELEMENTS IN ACCORDANCE WITH OUR INSTRUCTIONS
 DATED AT OTTAWA THIS 11th DAY OF OCTOBER 1972
 VANIER INVESTMENTS LIMITED
 T. C. Cassidy

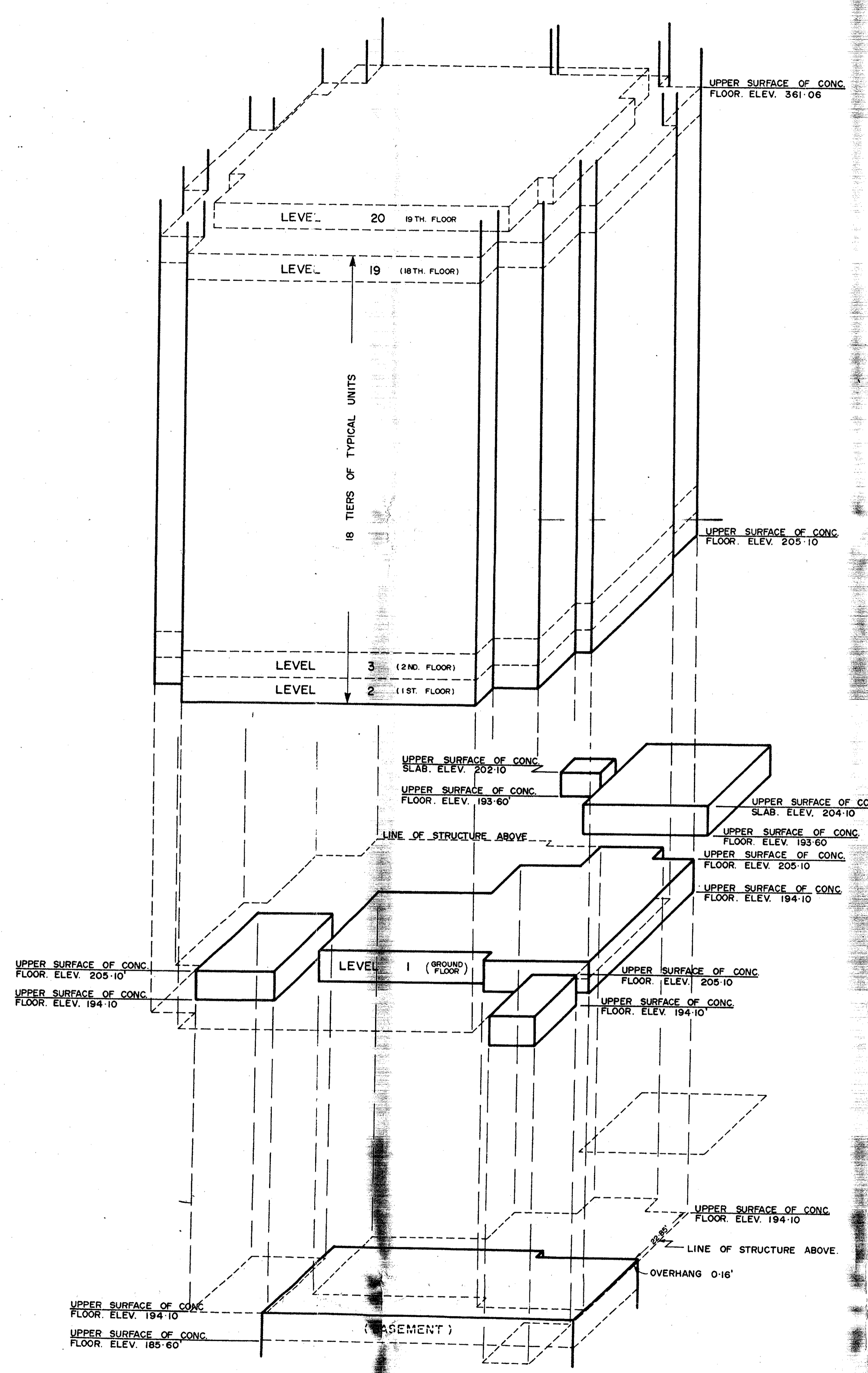
SURVEYOR'S CERTIFICATE
 I HEREBY CERTIFY THAT
 1. THIS SURVEY AND PLAN ARE CORRECT AND IN ACCORDANCE WITH THE CONDOMINIUM ACT, AND THE SURVEYS ACT AND THE REGULATIONS MADE THEREUNDER.
 2. I WAS PRESENT AND DID PERSONALLY SUPERVISE THE SURVEY REPRESENTED BY THIS PLAN.
 3. THIS PLAN CONTAINS A TRUE COPY OF THE FIELD NOTES OF SURVEY.
 4. THE SURVEY WAS COMPLETED ON THE 11th DAY OF OCTOBER 1972.

OCTOBER 11 1972
 Charles W. Fairhall
 C.W. FAIRHALL
 ONTARIO LAND SURVEYOR

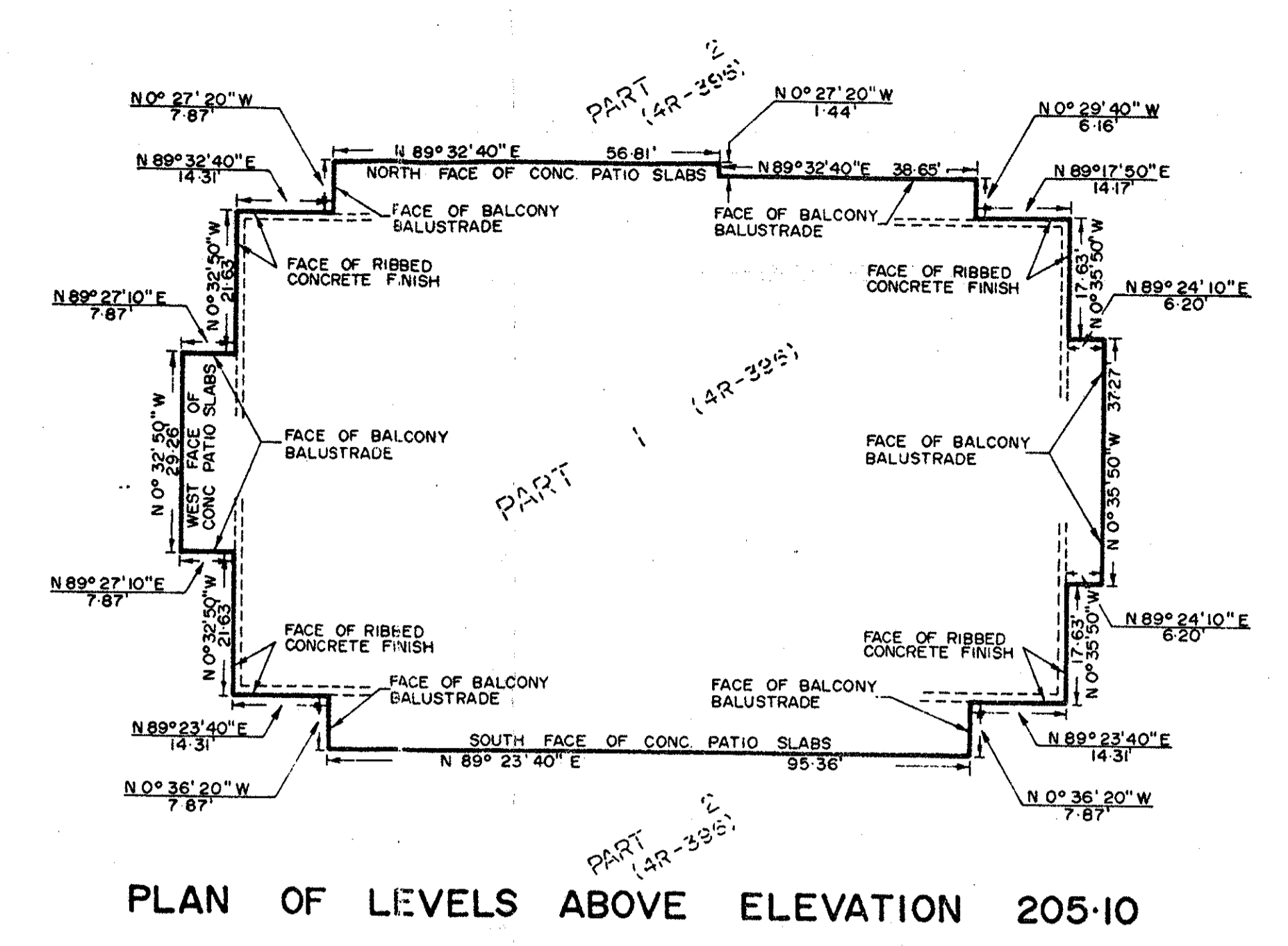
SURVEYOR'S CERTIFICATE
 I HEREBY CERTIFY THAT THE BUILDING SHOWN ON THIS PLAN IS IN EXISTENCE AND THAT THE UNITS DESIGNATED ON THIS PLAN SUBSTANTIALLY REPRESENT THE UNITS WITHIN THE STRUCTURE

OCTOBER 11 1972
 Charles W. Fairhall
 C.W. FAIRHALL
 ONTARIO LAND SURVEYORS

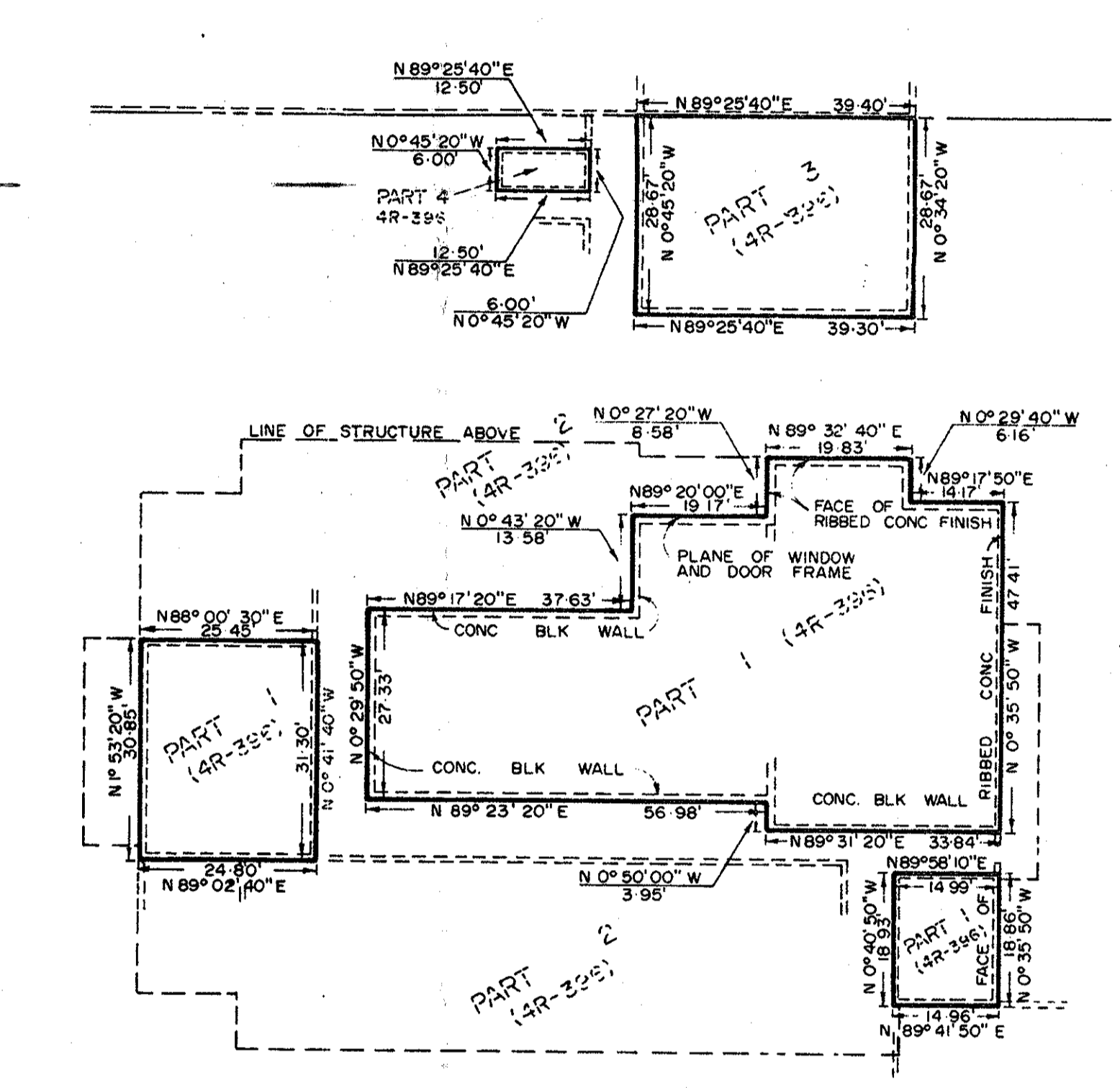
FAIRHALL & MOFFATT LIMITED
 ONTARIO LAND SURVEYORS
 OTTAWA ONTARIO



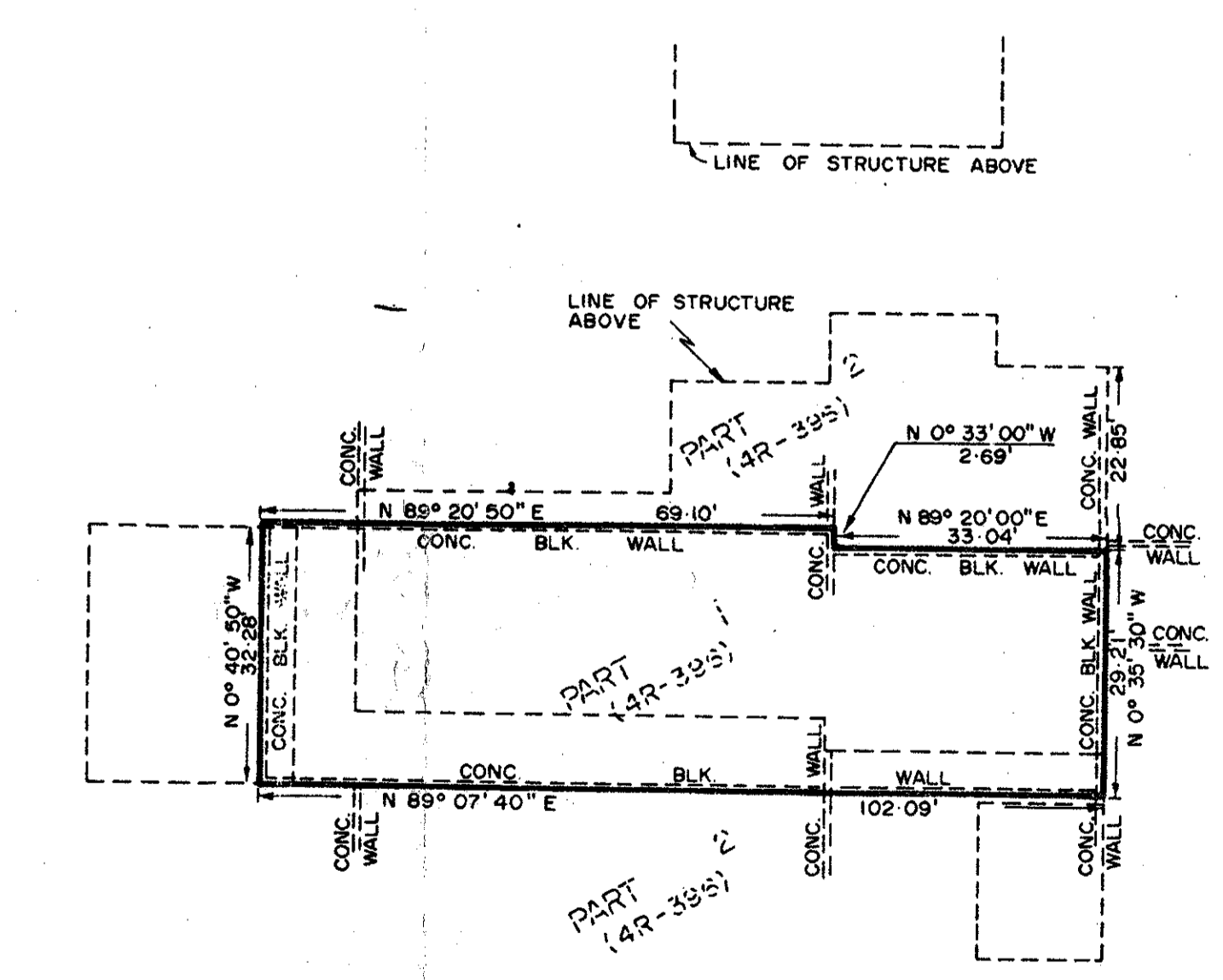
EXPLODED OBLIQUE VIEW ILLUSTRATING RELATIONSHIP BETWEEN LEVELS.



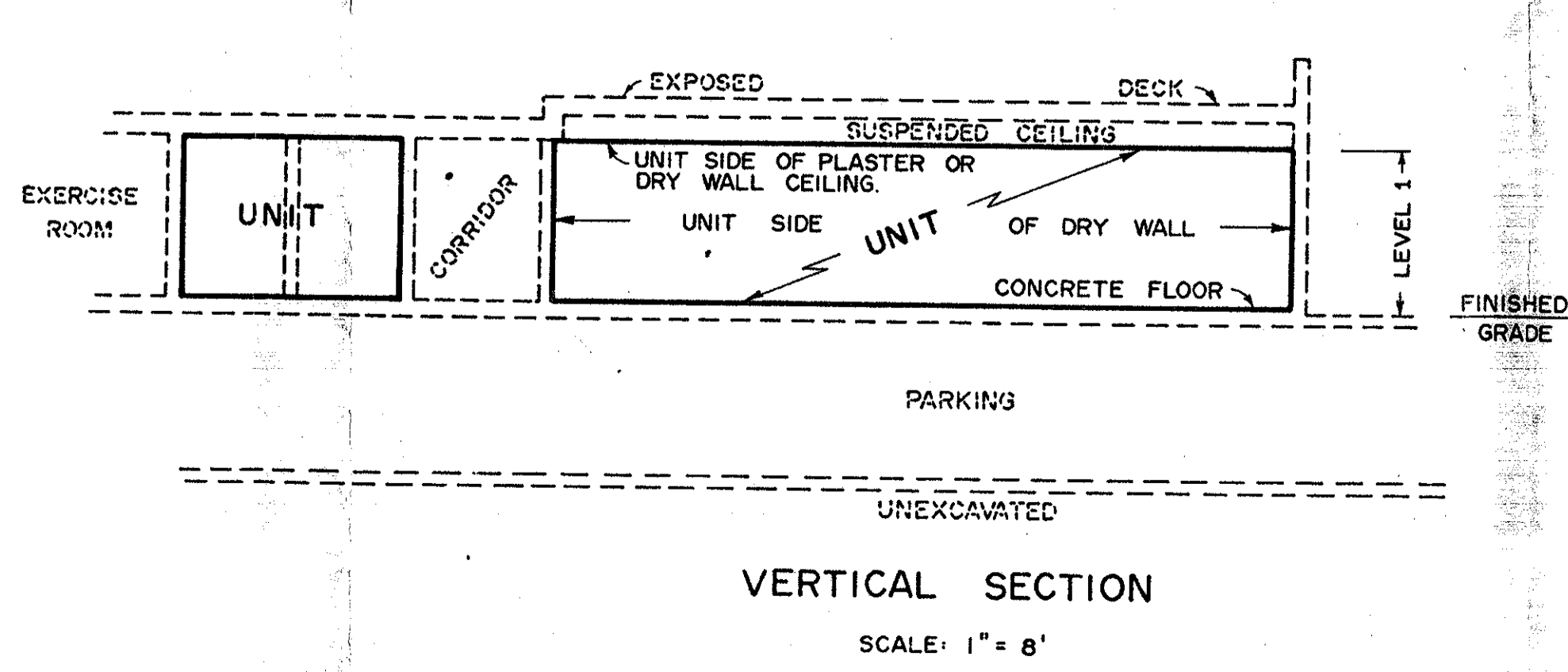
PLAN OF LEVELS ABOVE ELEVATION 205.10
 SCALE: 1" = 20'



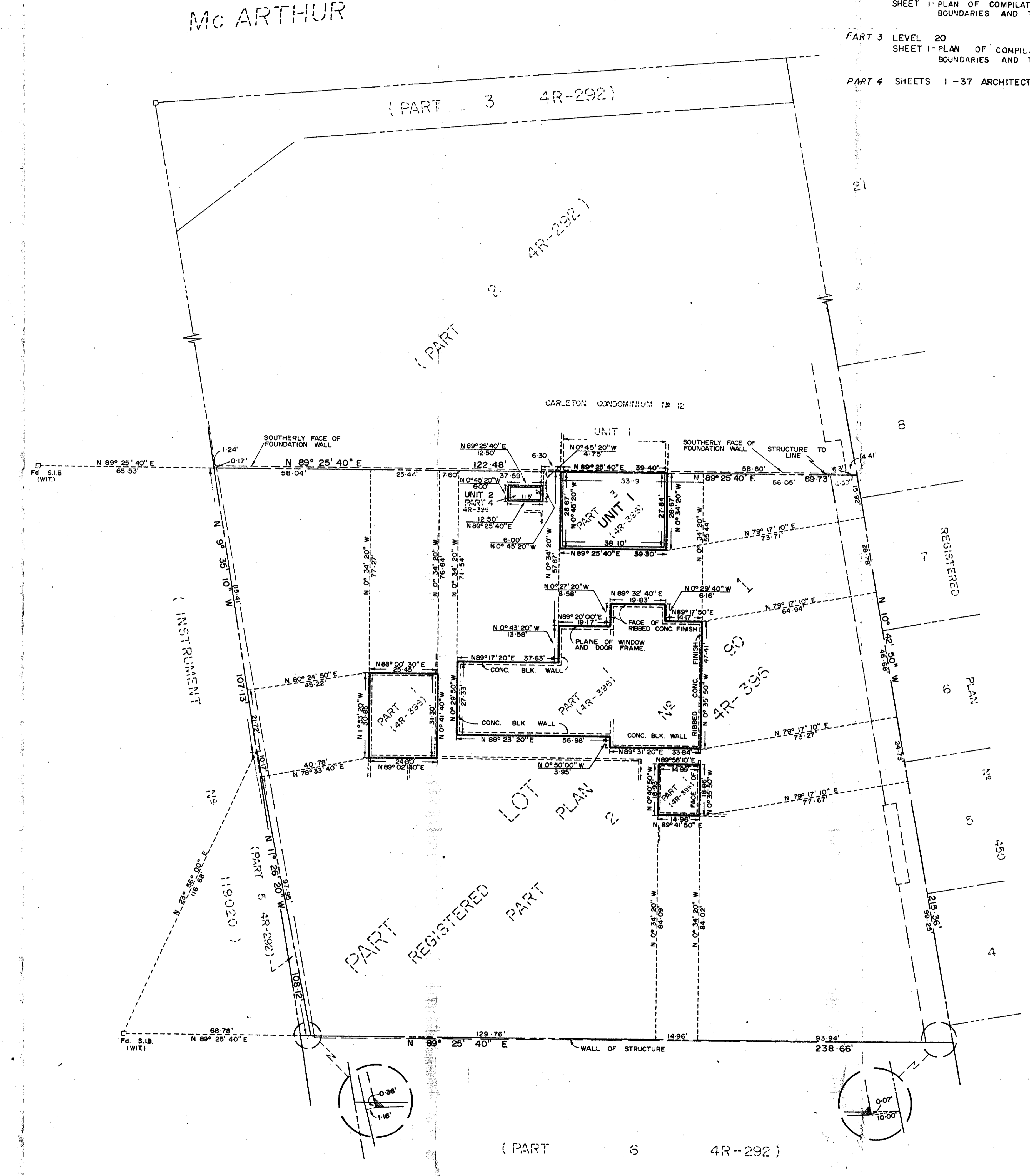
PLAN BETWEEN ELEVATIONS 194.10' AND 205.10



PLAN BELOW ELEVATION 194.10
 SCALE: 1" = 20'



VERTICAL SECTION
 SCALE: 1" = 8'



UNIT BOUNDARY DEFINITION
 VERTICAL - FROM THE UPPER SURFACE OF THE CONCRETE FLOOR TO THE UNDER SURFACE OF THE DRY WALL OR PLASTER CEILING.
 HORIZONTAL - FROM THE UNIT SIDE OF THE DRY WALL FINISH ON THE EXTERIOR WALLS OF THE BUILDING OF WHICH THE UNIT IS PART, PARTITIONS SEPARATING SUCH A UNIT FROM OTHER UNITS, CORRIDORS, STAIRS, ELEVATORS, INCINERATORS AND OTHER MECHANICAL EQUIPMENT SPACES AND THE EXTENSION OF THE PLANES OF SUCH SURFACES ACROSS OPENINGS FOR DOORS LEADING OUT OF SUCH UNITS AND WINDOWS.
 NOTE - UNITS 1 & 2 LEVEL 1 TO BE HELD IN SINGLE OWNERSHIPS.