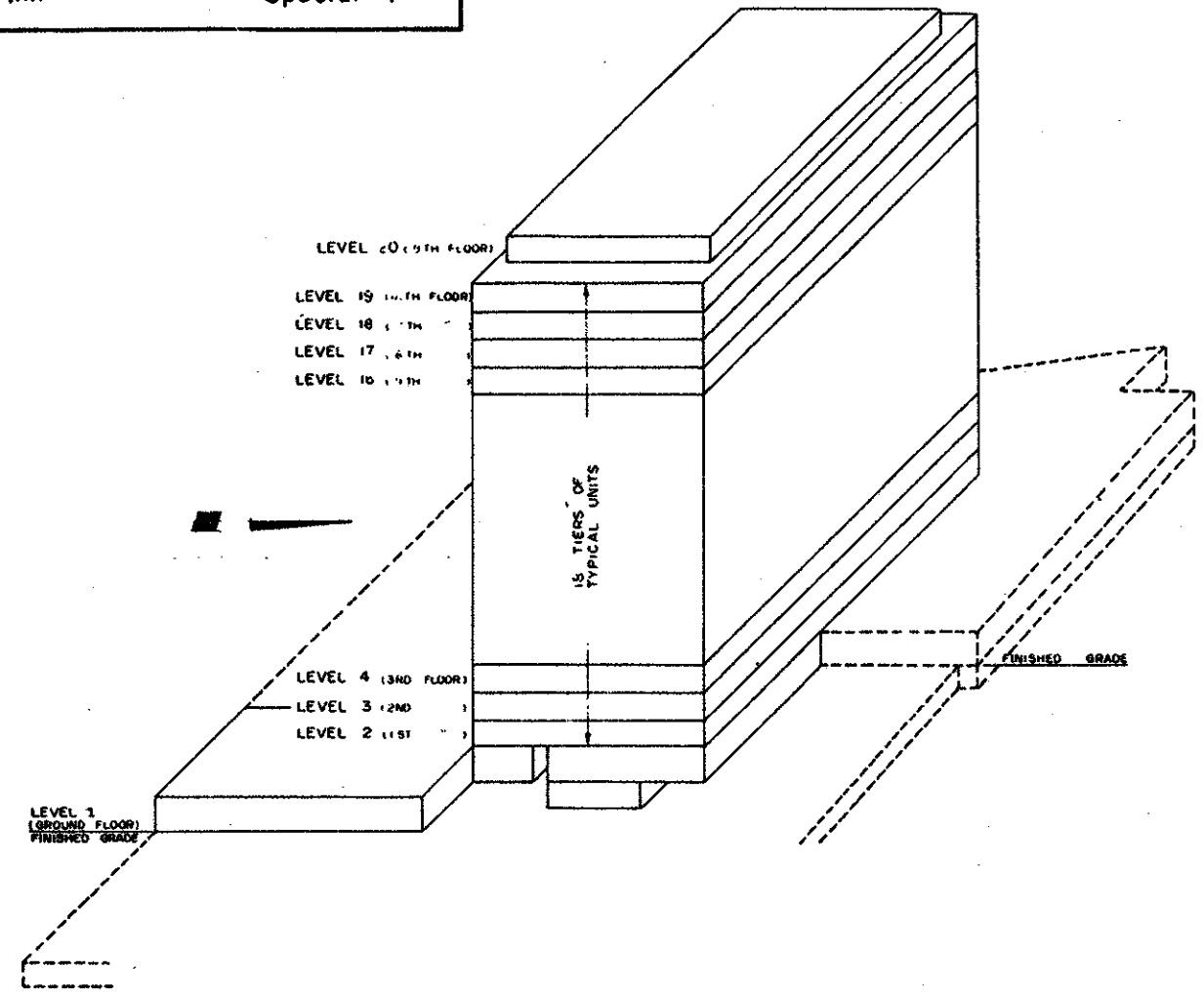
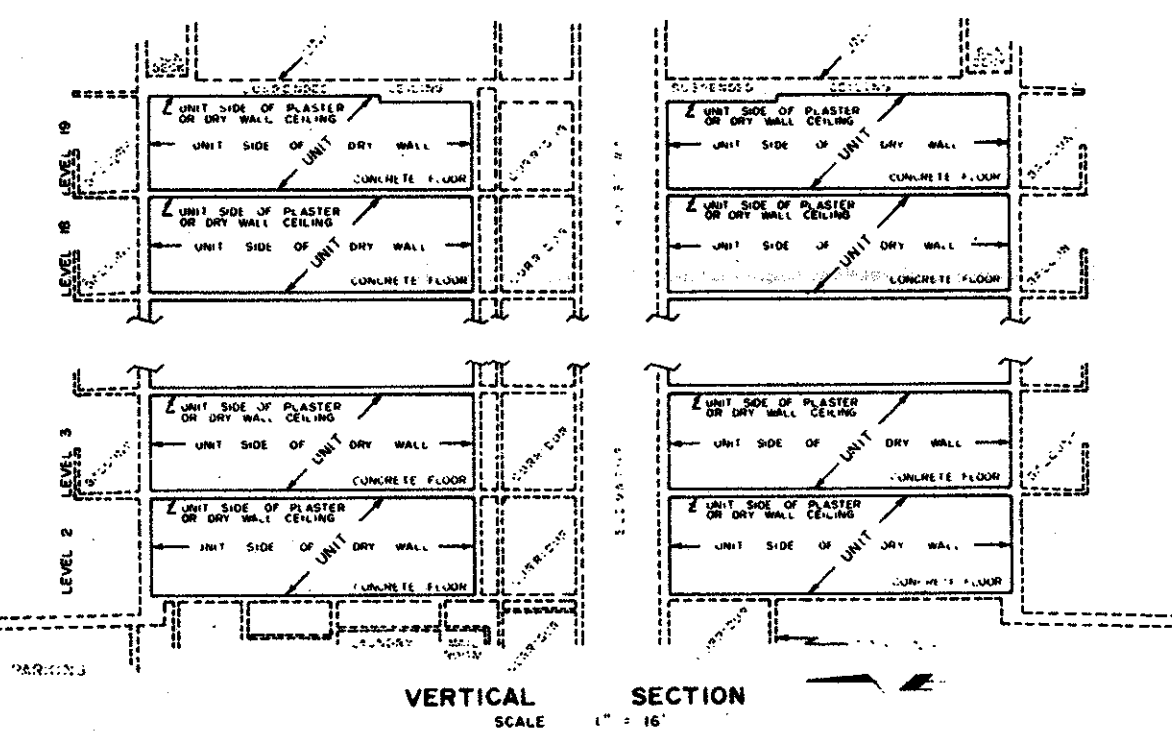
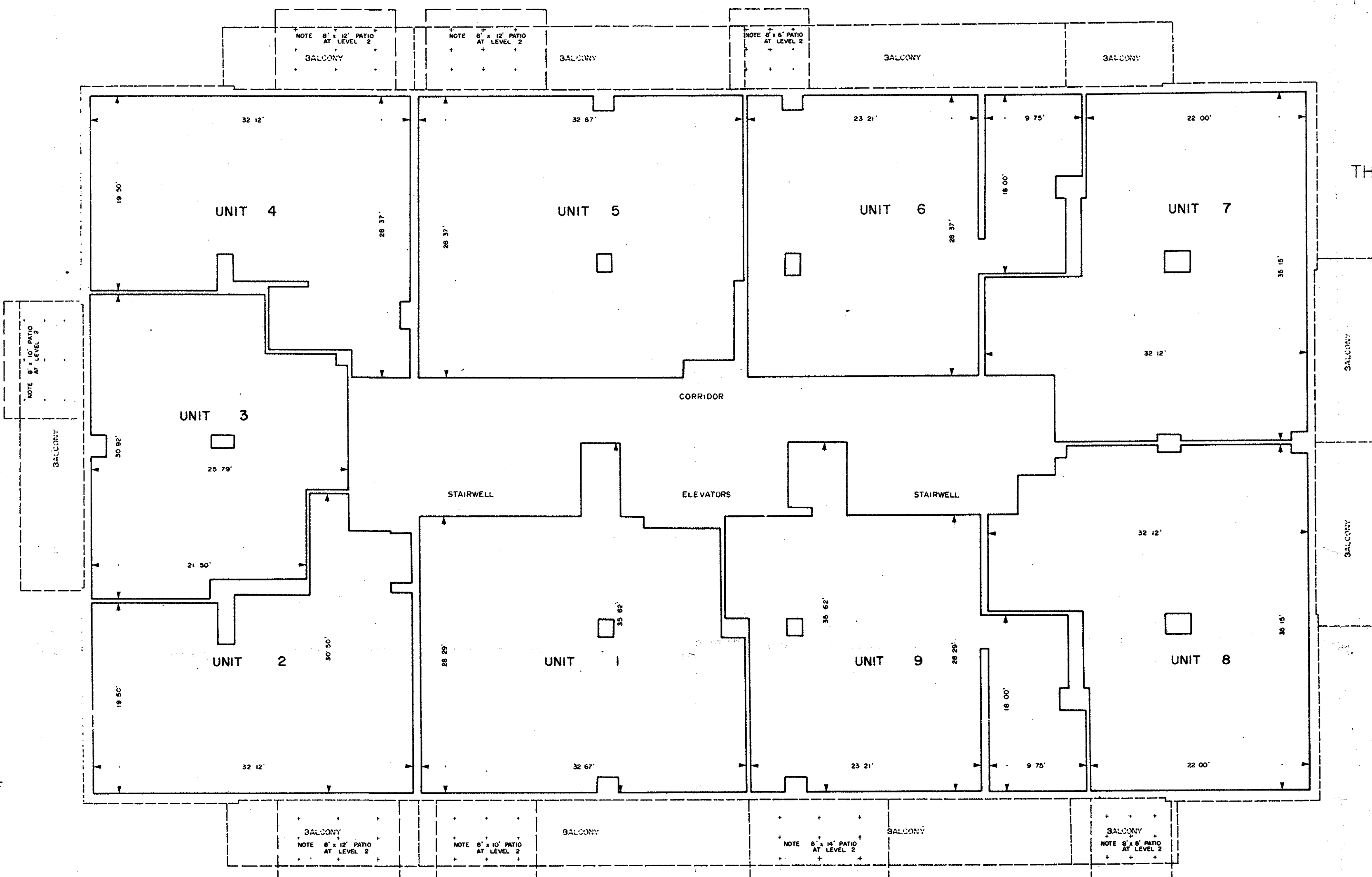


PLAN MATERIAL
 Plastic Material - Chronoflex
 Gauge - 0.003
 Process - Photographic
 Ink - Special "T"

CARLETON CONDOMINIUM PLAN N° 15
 PART 2 SHEET 1 OF 1 SHEET LEVELS 2 TO 19
 UNITS 1 TO 9
 REGISTERED IN THE OFFICE OF LAND TITLES
 AT OTTAWA AT 5 O'CLOCK ON THE
 DAY OF 1972
 AMENDMENT TO DESCRIPTION
 AMENDED IN ACCORDANCE WITH JUDGE'S
 ORDER REGISTERED AS 176409
 27-5117
 J. L. Staden
 MASTER OF TITLES
 APPROVED FOR REGISTRATION
 27 April 1972
 J. C. Smith
 ASSISTANT MASTER OF TITLES
 DECLARATION REGISTERED AS N°



OBLIQUE VIEW ILLUSTRATING RELATIONSHIP OF LEVELS



PLAN OF COMPILATION

SHOWING
 THE SPECIFICATION AND RELATIONSHIP BETWEEN
 THE BOUNDARIES OF UNITS 1 TO 9 BOTH INCLUSIVE
 LEVEL 2 TO 19 AND THE MONUMENTATION

SCALE 1" TO 8'
 C. W. FAIRHALL
 ONTARIO LAND SURVEYOR

1972

LEGEND
 — DENOTES UNIT BOUNDARIES
 - - - DENOTES EXTERIOR FACE OF STRUCTURAL WALLS

OWNER'S CERTIFICATE
 THIS IS TO CERTIFY THAT THE PROPERTY INCLUDED IN THIS PLAN HAS BEEN LAID
 OUT INTO UNITS AND COMMON ELEMENTS IN ACCORDANCE WITH OUR INSTRUCTIONS
 DATED AT OTTAWA THIS 11TH DAY OF OCTOBER 1972

VANIER INVESTMENTS LIMITED
J. C. Smith

SURVEYOR'S CERTIFICATE
 I HEREBY CERTIFY THAT THE BOUNDARIES SHOWN ON THIS PLAN ARE IN EXISTENCE
 AND THAT THE UNITS DESIGNATED ON THIS PLAN SUBSTANTIALLY REPRESENT THE
 UNITS WITHIN THE STRUCTURES

OCTOBER 11 1972
C. W. Fairhall
 C. W. FAIRHALL
 ONTARIO LAND SURVEYOR

UNIT BOUNDARY DEFINITION
 VERTICAL - FROM THE UPPER SURFACE OF THE CONCRETE FLOOR TO THE LOWER
 SURFACE OF THE DRY WALL OR PLASTER CEILING
 HORIZONTAL - FROM THE UNIT SIDE OF THE DRY WALL FINISH ON THE EXTERIOR
 WALLS OF THE BUILDING OF WHICH THE UNIT IS PART,
 TO THE UNIT SIDE OF THE DRY WALL FINISH ON THE WALLS AND
 PARTITIONS SEPARATING SUCH A UNIT FROM OTHER UNITS, CORRIDORS,
 STAIRS, ELEVATORS, INCINERATORS AND OTHER MECHANICAL EQUIPMENT
 SPACES AND THE EXTENSION OF THE PLANS OF SUCH SURFACES
 ACROSS OPENINGS FOR DOORS LEADING OUT OF SUCH UNITS AND
 WINDOWS

NOTE FOR COMPLETE UNIT BOUNDARY DEFINITION REFER TO PAGE 2
 OF THE DECLARATION

FAIRHALL & MOFFATT LIMITED
 ONTARIO LAND SURVEYORS
 OTTAWA ONTARIO